



## FROG LEAP® CATALOG

POOL | HOT TUB | SWIM SPA



# KING TECHNOLOGY



*King Technology Employees*

Thank you for your continued partnership, which we deeply value—last year's highlights included launching FROG Pool Solutions and FROG Algae Blocker 4Pro for service professionals, both of which garnered industry acclaim for their cutting-edge Pool Pod Technology, setting new heights for effective, easy water care.

While we will continue promoting our new pool solutions, this year we are also delighted to introduce innovative products that expand the FROG line of hot tub and swim spa support chemicals. They offer everything needed for start-up, water balance and even purging! They'll help you better merchandise products, which ultimately saves you valuable time to focus on sales.

Our vision to Enrich Lives Daily inspires us to create water care solutions that simplify water care for your customers, and make sales smoother for you. With 45+ years of commitment to innovation and excellence, we look forward to supporting your success this year, and in the years to come.

Thank you for choosing us as your partner.

Warm regards,  
**King Technology Family**

## OUR MISSION:

Water treatment rock n' roll  
through radical invention,  
unique delivery and Star  
Wars ingredients.

## OUR VISION:

Enrich Lives Daily

# WE SUPPORT YOUR BUSINESS



Enforced Minimum  
Advertised Price (MAP)



Proven repeat  
business model



High quality, truly  
innovative products



Program  
incentives



FROG Water Care®  
App



*Planograms for compelling & easy merchandising,  
FREE POP, literature & merchandising support.*

## WORLD-CLASS CUSTOMER SUPPORT

Visit [partners.kingtechnology.com](https://partners.kingtechnology.com) or call 800-222-0169



Find **FREE**  
Resources Here

# FREE FROG WATER CARE® APP & PROGRAMS

## THE APP CONNECTS YOU WITH YOUR CUSTOMERS

### An updated, more powerful version is coming soon:

- QR code functionality - a unique QR code locks you in as their preferred dealer
- New, easier user interaction
- Replacement reminders, testing help, and more with email and text-based communications



**Download the FREE**

FROG Water Care® App



Download on the  
App Store



GET IT ON  
Google Play



## PROGRAMS DRIVE REPEAT BUSINESS TO YOUR STORE

### Partner for Success with King Technology

Promote FROG products and enjoy the benefits! Get free goods, repeat sales, and loyal customers. Our proven programs will boost your profits and help grow your business. And we've added three new programs for the FROG Balancing Basics™ Kit! See all of our programs at our partners site:

[partners.kingtechnology.com/programs](https://partners.kingtechnology.com/programs)



#### LAUNCH OFFER

Buy 5 FROG Balancing Basics Kits - get one free + 6 FROG Tote Bags and free freight.



#### FROG VIP™

The FROG Balancing Basics Kit includes an invitation to an exclusive membership in FROG VIP – a dedicated professional support network that provides complementary prioritized water care support for your customers.



#### FROG BALANCING BASICS™ KIT SMART START

Include the Kit on 5 new hot tub or swim spa sales and receive 1 free Kit.

# CREATE FRESH MINERAL WATER<sup>®∞</sup> IN SWIM SPAS, HOT TUBS & POOLS



## FROG SANITIZING MINERALS<sup>®</sup> OFFER PRODUCTS THAT:

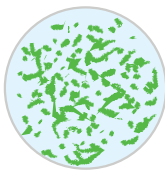
- Deliver what no one else can: Fresh Mineral Water<sup>∞</sup>
- Drive strong repeat sales with very satisfied customers
- Extend chlorine use up to 2X
- Are EPA registered

### Not all Minerals are the Same. In FROG<sup>®</sup> Minerals:

- Silver destroys bacteria
- Calcium carbonate adds softness, absorbs acids and helps keep pH balanced for Cleaner, Clearer, Softer<sup>®</sup> water

### FROG<sup>®</sup> Minerals + a Low Level of Chlorine Kill Bacteria

The petri dishes below demonstrate the disinfection capabilities of minerals with 0.5 ppm chlorine for killing fresh cultures of E. coli bacteria



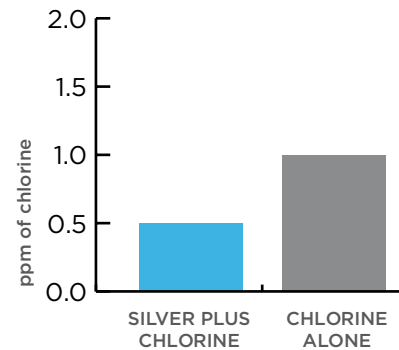
**No treatment**  
Shows rapid  
bacteria growth



**Silver plus 0.5 ppm chlorine**  
Shows no  
bacteria growth

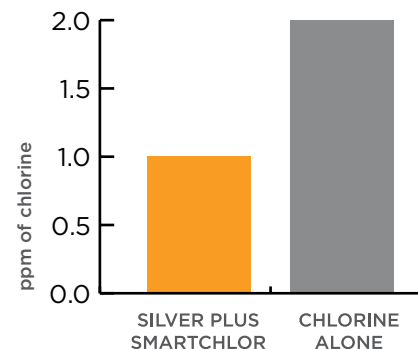
***There's a FROG<sup>®</sup> product for every pool, hot tub,  
and now swim spa!***

### FROG Minerals Reduce Chlorine Use in Pools Up to 50%\*



*Silver plus 0.5 ppm of chlorine is as effective as 1.0 ppm of chlorine alone.*

### FROG Minerals Reduce Chlorine Use in FROG<sup>®</sup> @ease<sup>®</sup> Swim Spas & Hot Tubs up to 75%\*



*Silver plus 0.5 - 1.0 ppm of SmartChlor<sup>®</sup> is as effective as 2.0 ppm of chlorine alone.*

# CYANURIC ACID'S NEGATIVE IMPACT ON HOT TUB & SWIM SPA WATER

**Every bottle of dichlor is about 50% Cyanuric Acid.**

The CDC does not recommend the use of chlorine with Cyanuric Acid in hot tubs or swim spas.<sup>1</sup>



With every dose of dichlor, the Cyanuric Acid builds while the chlorine becomes less and less effective. Within seven weeks, a consumer may have no option but to drain and refill their hot tub or swim spa.

Weeks	Cyanuric Acid Level	Results
4	50 ppm	Problems begin
7	100 ppm	Chlorine ineffective
10	150 ppm	Unrecoverable

*Based on 1/2 tsp. per 100 gallons 4x per week*

**Cloudy**

**Smelly**

**Cyanuric Acid levels over 50 ppm make water that's:**

**Hard to Manage**

**Itchy**

**The good news is FROG @ease has 0% Cyanuric Acid!**

**0% Cyanuric Acid**

**Learn more about CYA:**  
[nocya.com](http://nocya.com)

**partners.kingtechnology.com**  
Click on Training

**Promote FROG @ease:**  
Hot tub and swim spa owners struggling with water care? When they test their Cyanuric Acid and the levels are high, you'll have the solution - FROG @ease.

CYA Test Strip Card available at [partners.kingtechnology.com](http://partners.kingtechnology.com)  
**ORDER CODE: 20-49-0221**

**WONDERING WHY YOUR HOT TUB WATER IS CLOUDY AND HARD TO MANAGE?**  
**THIS'LL HELP CLEAR THINGS UP**

Even though Cyanuric acid (CYA) isn't recommended for hot tubs, most chlorine sanitizers contain massive amounts of it. Take this quick test to find out if CYA is the cause of your hot tub water problems.

**HOW TO USE:**  
1. Remove only fresh hot water.  
2. Immerse strip in hot water.  
3. Remove strip and read results.  
4. Compare color to color chart.

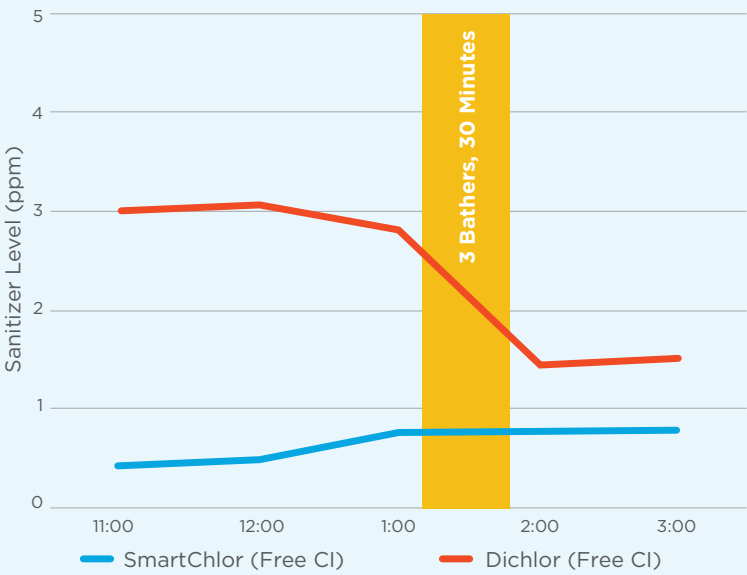
**CAUTION:**  
A high result indicates excessive amounts of CYA. High CYA levels can cause water to become cloudy and irritate skin and eyes.

**Color Chart:**  
0 40 100 150 250 500  
Low Medium High Very High Excessive

Fortunately, FROG @ease has 0% CYA

# FROG® @ease® WITH SMARTCHLOR® TECHNOLOGY

Self-Regulating Properties of SmartChlor® Technology

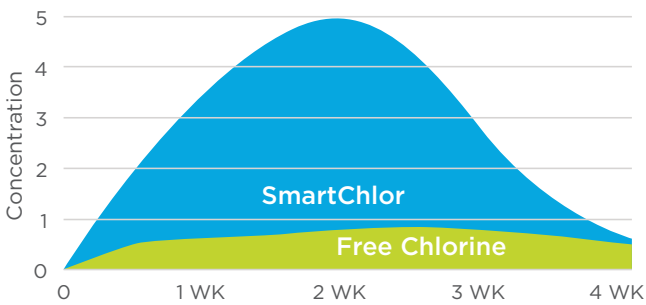


**SmartChlor** Technology maintains a consistently low Free Chlorine level of 0.5 – 1.0 ppm at all times. It does so by creating a Chlorine Reserve that converts to Free Chlorine when it senses demand.

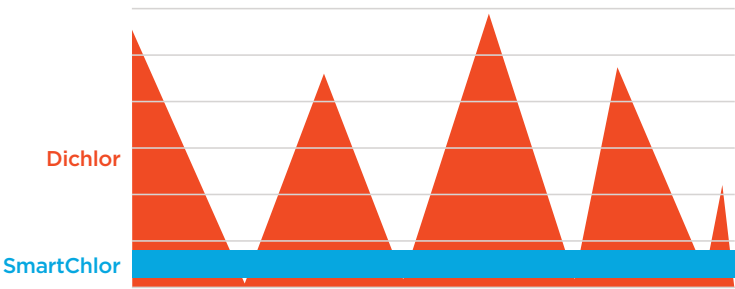
**Dichlor’s** Free Chlorine level drops significantly under demand, requiring the user to shock.

***SmartChlor reduces shocking to only once a month!***

The Genius of SmartChlor®



SmartChlor® vs. Dichlor



No more yo-yo chlorine levels with SmartChlor!

	SmartChlor®	Dichlor
Total Chlorine	SmartChlor Reserve converts to Free Chlorine when needed	To determine level of chloramines measure the difference between Free Chlorine and Total Chlorine
Free Chlorine	Self-regulates at a consistent 0.5 – 1.0 ppm for the life of the Cartridge	Need to keep adding to maintain 2.0 – 4.0 ppm
Shocking	Once a month	At least weekly
Cyanuric Acid	No Cyanuric Acid — so no problems	50% Cyanuric Acid — builds up quickly

## WELCOME TO EASY SWIM SPA WATER CARE

A person is swimming in a white swim spa. The water is bright blue and splashing. In the background, there is a white building with a dark door and a black lantern-style light fixture. A blue @ease sanitizing device is floating in the water in the foreground.

# THE FIRST COMPLETE SOLUTION FOR SWIM SPAS

## FROG® @ease® SANITIZING SYSTEM FOR SWIM SPAS

- Kills bacteria with Sanitizing Minerals and a low amount of Chlorine
- Uses SmartChlor and Fresh Mineral Water™ Technology
- Flips when empty - prefilled Cartridges make replacement easy





## FROG® @ease® SANITIZING SYSTEM FOR SWIM SPAS

Fresh Mineral Water<sup>™</sup> with SmartChlor Technology for swim spas up to 3,000 gallons. Comes with 1 FROG @ease Mineral Cartridge, 1 FROG @ease SmartChlor Cartridge (Cyanuric Acid Free), FROG Kick-It start-up shock 30 Test Strips and tether for optional use. Floats in the swim spa and flips when empty. Replace this System every 4 months or when draining and refilling, whichever comes first.

**ORDER CODE: 01-14-3292**

*6 systems per case / 20 cases per pallet*



## NEW! FROG KICK-IT™

The one dose start-up shock that establishes an initial chlorine level in your swim spa.

**ORDER CODE: 01-14-3296**

*24 packets per case (2 12-packs)*



## FROG® @ease® SMARTCHLOR® CARTRIDGE FOR SWIM SPAS

For use only with the FROG @ease Sanitizing System for Swim Spas. The unique SmartChlor Technology self-regulates, slowly releasing over 3-4 weeks for a consistent Free Chlorine level that is Cyanuric Acid free. This Cartridge is translucent gray - you can see the SmartChlor inside! When the System flips over, it's time to replace it.

**ORDER CODE: 01-14-3284**

*8 Replacement Cartridges per case / 78 cases per pallet*



## FROG MAINTAIN® FOR SWIM SPAS

The recommended non-chlorine maintenance shock for FROG @ease Sanitizing System for Swim Spas up to 3,000 gallons (Cyanuric Acid Free). Enjoy clean, sparkling water in just 15 minutes.

**ORDER CODE: 01-14-6134**

*12 Packets per case / 90 cases per pallet*

Add a packet of FROG Maintain for Swim Spas when the System tilts at about 3/4 rotated over in the water to maximize the life of the SmartChlor Cartridge by providing up to one more week.



## TETHER FOR FROG® @ease® SWIM SPA AND HOT TUB SYSTEMS

Durable, reusable gray silicone tether, 20.5" long. Sold separately.

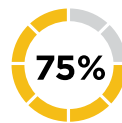
**ORDER CODE: 01-22-3130**

*5 bags / box*

# CREATE FRESH MINERAL WATER<sup>®∞</sup>



**FROG @ease, Serene, and Filter Mate Cartridges are recyclable via FROG's Recycling Program**



**Reduces chlorine use up to 75%\***



## FROG® @ease® FLOATING SANITIZING SYSTEM

Fresh Mineral Water<sup>®∞</sup> with SmartChlor Technology for any hot tub up to 600 gallons. Comes with 1 FROG @ease Mineral Cartridge, 1 FROG @ease SmartChlor Cartridge (Cyanuric Acid Free), FROG Jump Start start-up shock and 30 FROG @ease Test Strips. Floats in the hot tub and flips when empty. Replace this System every 4 months or when draining and refilling, whichever comes first.

**NEW!** Now with a custom made hole for a tether. See our tether option sold separately on page 9.

**ORDER CODE: 01-14-3256**

*6 systems per case / 56 cases per pallet*



## FROG® @ease® SMARTCHLOR® CARTRIDGE 3 PACK

For use only with the FROG @ease Floating Sanitizing System. The unique SmartChlor Technology self-regulates, slowly releasing over 3-4 weeks for a consistent Free Chlorine level that is Cyanuric Acid free. When the System flips over, it's time to replace it.

**ORDER CODE: 01-14-3258**

*6 3-packs per case / 56 cases per pallet*



## FROG MAINTAIN®

The recommended non-chlorine maintenance shock for all FROG hot tub products. Up to 600 gallons. Enjoy clean, sparkling water in just 15 minutes. Cyanuric Acid free.

**ORDER CODE: 01-14-6132**

*72 units per case (6 12-packs) / 81 cases per pallet*



## FROG® JUMP START®

The effervescent start-up shock establishes an initial chlorine level for hot tubs up to 600 gallons.

**ORDER CODE: 01-14-6012**

*72 units per case (6 12-packs) / 81 cases per pallet*



## FROG® @ease® TEST STRIPS

With SmartChlor Technology's unique properties, FROG @ease has its own Test Strips with a convenient Out Indicator reading. It's easy to spot in its yellow container.

**ORDER CODE: 01-14-3350**

*30 count bottle / 12 bottles per case / 150 per pallet*



Reduces chlorine  
or bromine  
use up to 50%\*



### FROG SERENE® FLOATING SYSTEM

Fresh Mineral Water<sup>®</sup> for any hot tub up to 600 gallons. Comes with 1 FROG Serene Bromine Cartridge, 1 FROG Serene Mineral Cartridge, FROG Jump Start start-up shock and 10 FROG Test Strips. It simply floats in the hot tub.

**ORDER CODE:** 01-14-3883

6 systems per case / 90 cases per pallet



### FROG SERENE® CARTRIDGE KIT

Includes 1 FROG Serene Mineral Cartridge and 3 FROG Serene Bromine Cartridges.

**ORDER CODE:** 01-14-3856

6 units per case / 105 cases per pallet



### FROG SERENE® MINERAL CARTRIDGE

For use in the FROG Serene Floating and FROG Serene In-Line Systems. Lasts 4 months or until the hot tub is drained and refilled.

**ORDER CODE:** 01-14-3812

12 units per case / 186 cases per pallet

### FROG SERENE® BROMINE CARTRIDGE

For use in the FROG Serene Floating and FROG Serene In-Line Systems. Adjustable and long lasting (2-4 weeks).

**ORDER CODE:** 01-14-3824

24 units (2 12-packs) per case / 128 cases per pallet



### FROG FILTER MATE®

Get all the benefits of FROG Sanitizing Minerals — put FROG Filter Mate in a skimmer tray or filter well. Must use with bromine or chlorine to fully sanitize. Set reminder dial and replace every 4 months or when draining and refilling.

**ORDER CODE:** 01-14-3712

12 units per case / 150 cases per pallet



### FROG® TEST STRIPS

Only FROG Test Strips show the ideal chlorine or bromine levels of 1.0 - 2.0 ppm.

**ORDER CODE:** 01-14-3318

50 count bottle / 12 bottles per case / 150 cases per pallet

# FROG BALANCING BASICS™ KIT WITH FROG VIP™ SUPPORT

**NEW!**

## WE'RE ABOUT TO MAKE YOUR LIFE **A LOT EASIER**

Introducing **FROG Balancing Basics™ Kit** with **FROG VIP™**. Your customers get everything they need for hot tub or swim spa start-up. FROG VIP is a dedicated network of certified, professional operators ready to answer all your customers' questions on start-up and water balance.



# WE HELP YOUR CUSTOMERS ACHIEVE PERFECT BALANCE

FROG BALANCING BASICS KIT INCLUDES FROG VIP ONE-ON-ONE SUPPORT, DEDICATED PHONE LINE.



## FROG BALANCING BASICS™ KIT

5 standard water balancing chemicals + FROG VIP membership

ORDER CODE: **01-14-6300**

2 kits per case / 40 cases per pallet



### FROG JumpH™

Increases pH

2 lb. bottle

ORDER CODE: **01-14-6220**

12 units per case / 45 cases per pallet



### FROG DropH™

Decreases pH & Alkalinity

3 lb. bottle

ORDER CODE: **01-14-6200**

12 units per case / 45 cases per pallet



### FROG Target™

Increases Total Alkalinity

2 lb. bottle

ORDER CODE: **01-14-6250**

12 units per case / 45 cases per pallet



### FROG SooThe™

Increases Total Hardness

2 lb. bottle

ORDER CODE: **01-14-6260**

12 units per case / 45 cases per pallet



### FROG StoMPS™

Non-Chlorine Oxidizing Shock

2 lb. bottle

ORDER CODE: **01-14-6230**

12 units per case / 45 cases per pallet

## EACH BOTTLE FEATURES THE FROG TRUDOSE CAP™



Dosing is precise and always at hand - measurements are built in!

## STOCK MORE FROG PRODUCTS **SELL MORE!**

- Sell individual FROG Hot Tub & Swim Spa Support Chemicals
- Use with all FROG Sanitizing Systems & any other sanitizers
- The FROG Balancing Basics Kit is not sold on Amazon

# HOT TUB & SWIM SPA PIPE & JET CLEANSER

**NEW!**

Clean Starts Here

## Introducing Purge Products for Peak Performance



**Essential water care to keep hot tub and swim spa  
water clean and clear from the inside out**

- ✓ Powerful gel formula
- ✓ Optimizes your FROG cartridge life
- ✓ Thoroughly cleans hot tub & swim spa plumbing and jets
- ✓ No math, no spills, no staining



### **FROG® HOT TUB PIPE & JET CLEANSER PACKET**

Up to 600 gallons

**ORDER CODE: 01-14-6178**

72 units per case (6 12-packs)



### **FROG® HOT TUB PIPE & JET CLEANSER TUBE**

For use in hot tubs or swim spas

**ORDER CODE: 01-14-7800**

12 units per case (2 6-packs)

# FROG LEAP®: SANITIZING SYSTEM CREATES FRESH MINERAL WATER®

## WATER CARE IN 3 EASY STEPS!

Water simultaneously flows through the FROG Leap Infuzer combining minerals and chlorine to create Fresh Mineral Water in the pool.



step  
**1**

### MINERALS



#### FROG Leap® Anti-Bac Mineral Pac®

Lasts 6 months or 1 pool season  
(whichever is shorter)

step  
**2**

### ALGAE PROTECTION



#### FROG Leap® Wake Up!® & FROG Leap® Hibernation®

Use once in the spring and again in the fall for optimal performance

step  
**3**

### CHLORINE



#### FROG Leap® Torpedo Pac®

Replace every 2-3 weeks throughout the swim season as needed

**An exclusively branded system available only to authorized FROG dealers.**



# FROG® POOL SOLUTIONS SPECIALTY CHEMICALS

**NEW!**

## INTRODUCING: EASY ANSWERS TO CUSTOMERS' BIG ISSUES THE FIRST & ONLY LINE OF DRY SPECIALTY CHEMICALS



**EASY TO SELL.  
EASY TO USE.  
MAKES CUSTOMERS HAPPY.**

Green, murky, cloudy water? No more - 4 pool solutions solve your customers' water care issues in easy-to-use Pods:

- ✓ Lightweight, dry concentrated formula
- ✓ No mess, No guess, No stress™
- ✓ Prefilled
- ✓ No math, no spills, no staining



## FROG® ALGAE GONE™

### CURATIVE

Kills green and yellow algae with ease; treats and cures algae outbreaks. Dry, concentrated formula in prefilled Pods that come in pouches for up to 20K and 30K pools. Use in any pool.

For pools up to 20K, 2 Pods per pouch

**ORDER CODE: 01-10-6850**

*12 pouches per case / 81 cases per pallet*

For pools up to 30K, 3 Pods per pouch

**ORDER CODE: 01-10-6860**

*12 pouches per case / 81 cases per pallet*



## FROG® 90-DAY ALGAE BARRIER™

### PREVENTATIVE

Maintain algae free water for 90 days - Guaranteed! Dry, concentrated formula in prefilled Pods that come in pouches for up to 20K and 30K pools. Use in any pool.

For pools up to 20K, 2 Pods per pouch

**ORDER CODE: 01-10-6800**

*12 pouches per case / 81 cases per pallet*

For pools up to 30K, 3 Pods per pouch

**ORDER CODE: 01-10-6820**

*12 pouches per case / 81 cases per pallet*



## FROG® 90-DAY GOODBYE PHOS™

### PREVENTATIVE

Prevent phosphate buildup, which eliminates "food" for algae and improves filter efficiency for 90 days. Dry, concentrated formula in prefilled Pods that come in pouches for up to 30K pools.

For pools 7,500 - 30K, 3 Pods per pouch

**ORDER CODE: 01-10-7000**

*12 pouches per case / 81 cases per pallet*



## FROG® 90-DAY GOODBYE CLOUDY™

### PREVENTATIVE

Polishes pools, creates crystal clear, brilliant, sparkling water for 90 days. Dry, concentrated formula in prefilled Pods that come in pouches for up to 30K pools.

For pools up to 30K, 3 Pods per pouch

**ORDER CODE: 01-10-7010**

*12 pouches per case / 64 cases per pallet*

## DROP 'N GO™ IN THE SKIMMER - GOES TO WORK IMMEDIATELY IN ANY POOL

- Prevent algae outbreaks
- Cure algae outbreaks
- Prevent phosphate buildup
- Prevent cloudy water
- Dispenses within 24 hours; then remove



# CREATE FRESH MINERAL WATER<sup>®∞</sup>



**Reduces chlorine use up to 50%\***

## POOLS UP TO 25K

### FROG LEAP<sup>®</sup> INFUZER<sup>®</sup> 7800 WITH 25K MINERAL

For pools up to 25,000 gallons. System includes the Infuzer, 1 Anti-Bac Mineral Pac and a 6" nipple installation kit. The Infuzer should not be installed off-line.

**ORDER CODE: 01-01-7820**

*96 units per pallet*



### FROG LEAP<sup>®</sup> ANTI-BAC MINERAL PAC<sup>®</sup> 25K

For pools up to 25,000 gallons. Replace the Anti-Bac Mineral Pac every 6 months or 1 pool season, whichever is shorter. Fits FROG Leap 7800 and Pool FROG<sup>®</sup> 6100.

**ORDER CODE: 01-12-7822**

*12 units per case / 24 cases per pallet*



### FROG LEAP<sup>®</sup> POOL WAKE UP!<sup>®</sup> & POOL HIBERNATION<sup>®</sup> (All-Out<sup>®</sup> included)

3-Step opening or closing kit includes Depth Charge<sup>®</sup> non-chlorine shock, Reveille<sup>®</sup> chlorine shock and All-Out 90-day algae preventative. One kit per 15,000 gallons.

**ORDER CODE: 01-10-7858**

*4 units per case / 40 cases per pallet*



### FROG LEAP<sup>®</sup> TORPEDO PAC<sup>®</sup> 2.2 LBS.

Prefilled with Trichlor. For use in FROG Leap 7800 and Pool FROG 6100 or 5400.

**ORDER CODE: 01-03-7937**

*12 units per case (2 6-packs) / 40 cases per pallet*



### FROG<sup>®</sup> TEST STRIPS

Only FROG Test Strips show the ideal Free Chlorine levels of 0.5 - 1.0 ppm.

**ORDER CODE: 01-14-3318**

*50 count bottle / 12 bottles per case / 150 cases per pallet*



## POOLS UP TO 40K

### FROG LEAP TWIN® WITH 40K MINERAL

For pools up to 40,000 gallons. System includes the Twin Infuzer and 1 Anti-Bac Mineral Pac. The Twin Infuzer should not be installed off-line.

**ORDER CODE: 01-01-7850**

24 units per pallet



### FROG LEAP® ALL-OUT®

Fits inside FROG Leap Anti-Bac Mineral Pac. Also fits Pool FROG® Systems.

**ORDER CODE: 01-10-7872**

12 units per case / 50 cases per pallet



### FROG LEAP® ANTI-BAC MINERAL PAC® 40K

For pools up to 40,000 gallons. Replace the Anti-Bac Mineral Pac every 6 months or every pool season, whichever is shorter. Fits FROG Leap Twin or Pool FROG 5400.

**ORDER CODE: 01-12-7852**

12 units per case / 24 cases per pallet



### FROG LEAP® POOL WAKE UP!® & POOL HIBERNATION® (All-Out® included)

3-Step opening or closing kit includes Depth Charge® non-chlorine shock, Reveille® chlorine shock and All-Out 90-day algae preventative. One kit per 15,000 gallons.

**ORDER CODE: 01-10-7858**

4 units per case / 40 cases per pallet

## POOLS 2K TO 10K



### FLIPPIN' FROG®

For soft-sided pools 2,000 to 5,000 gallons. Flippin' FROG Mineral Cartridge lasts 1 pool season. Replace Flippin' FROG Chlorine Cartridge throughout the pool season as needed.

**ORDER CODE: 01-12-8406**

6 systems per case / 49 cases per pallet

### FLIPPIN' FROG® REPLACEMENT CHLORINE CARTRIDGE

**ORDER CODE: 01-03-8356**

6 units per case / 84 cases per pallet



### FLIPPIN' FROG XL®

For any pool 5,000 to 10,000 gallons. Flippin' FROG XL Mineral Cartridge lasts 1 pool season. Replace Flippin' FROG XL Chlorine Cartridge throughout the pool season as needed.

**ORDER CODE: 01-12-8606**

6 systems per case / 20 cases per pallet

### FLIPPIN' FROG XL® REPLACEMENT CHLORINE CARTRIDGE

**ORDER CODE: 01-03-8550**

8 units per case / 78 cases per pallet

# DESIGNED FOR SERVICE PROS: FROG ALGAE BLOCKER 4PRO™

NEW!



## PREVENT & CURE ALGAE

PROTECT YOUR  
PROFITS & REPUTATION

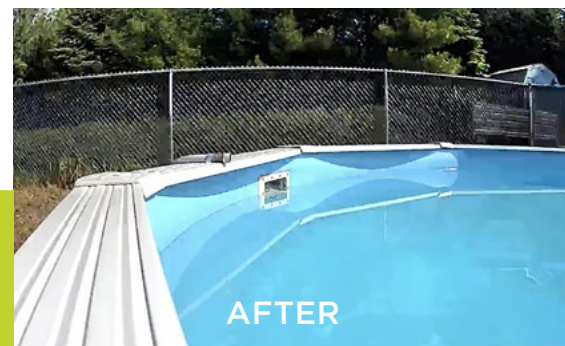
### Introducing FROG Algae Blocker 4Pro™

- **PROTECT** against black, yellow and green algae up to **6 MONTHS. KILL** yellow and green algae outbreaks
- Avoid over/underdosing — **1 Pod** per 10,000 gallons
- Forget lugging, measuring, spilling, staining, worrying
- Drop 'n Go™, with 4x Stain Guard™ Protection



**PROTECTS ALL POOL SURFACES  
FROM STAINING**

Murky, Green to  
Sparkling Clean



## PODS GO TO WORK IMMEDIATELY; REMOVE ON NEXT SERVICE VISIT



Prefilled to avoid  
over/underdosing



Simply drop into  
the skimmer



Lasts up to  
6 months



## Saves Time. Increases Profits. Easy to Use.

For the most concentrated, proven and tested dry algaecide, formulated with **25% more stain inhibitors** to protect pool surfaces, get FROG Algae Blocker 4Pro. Drop it in the skimmer, the content dissolves in hours. Done!



### FROG ALGAE BLOCKER 4PRO™, BUCKET

One lightweight bucket for your route, easy to carry, takes less space, no spills.  
1 Pod per 10,000 gallons.

ORDER CODE: **01-18-4425**

*18 Pods per bucket / 4 buckets per case / 20 cases per pallet*



### INSTANT FROG®

No installation. Drop it in the skimmer basket. Replace every 6 months.  
Cuts chlorine use up to 50%\*

RETAIL ORDER CODE: **01-18-4406**

*6 units per case / 112 cases per pallet*

BULK FOR SERVICE ORDER CODE: **01-18-4410**

NOTE: NOT FOR RETAIL SALE.

*6 units per case / 110 cases per pallet*

NEED HELP? WE'RE ONLY  
A CALL OR CLICK AWAY

## CONTACT CUSTOMER SERVICE

Mon - Fri 8 am - 5 pm CDT


Phone: 800-222-0169

Email: [Customer.Service@KingTechnology.com](mailto:Customer.Service@KingTechnology.com)

Chat: **Ask FROG®** on [www.frogproducts.com](http://www.frogproducts.com)

## GET FREE RESOURCES 24/7

Get FREE training 24/7, take advantage of programs, order free POP, and get apparel – all on [partners.kingtechnology.com](http://partners.kingtechnology.com)!

 <b>Training</b> Interactive game style format shows how to sell FROG <a href="#">Details</a>	 <b>Programs</b> Earn incentives for selling FROG products <a href="#">Details</a>	 <b>POP and Literature</b> Order POP materials and literature to help sell FROG! <a href="#">Details</a>	 <b>FROG Apparel and Promotional Items</b> See all FROG Apparel and Promotional Items for you! <a href="#">Details</a>
© 2025 King Technology 6000 Clearwater Drive Minnetonka, MN 55348 952-933-6118	Documents Training Programs Policies Dealer Locator Sign Up	Home About Us Contact	Contact Customer Service ☎ 1-800-222-0169 ✉ <a href="mailto:customer.service@kingtechnology.com">customer.service@kingtechnology.com</a>



**Find Free  
Resources Here!**

## HELP US PROTECT OUR BRAND

King Technology's trademarks are some of our most valuable assets. They distinguish our products from our competitors' and signify the high quality of our products. They protect both of our businesses. Take proactive steps to maintain a strong FROG brand presence and ensure a positive experience for your customers. All retailers who sell FROG products on their website MUST register their website at [kingauthorizedseller.com](http://kingauthorizedseller.com)



**Learn how to  
use them,  
scan here**

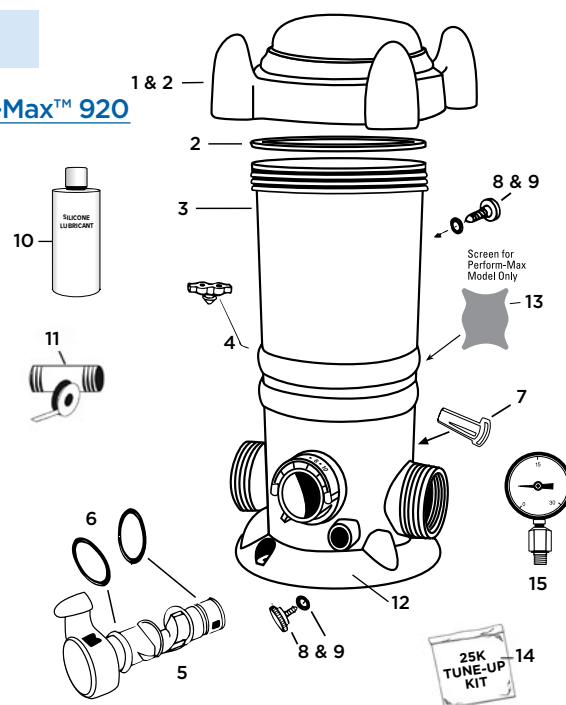


# PARTS DIAGRAMS

For an ideal stocking order, see the most used replacement parts highlighted.

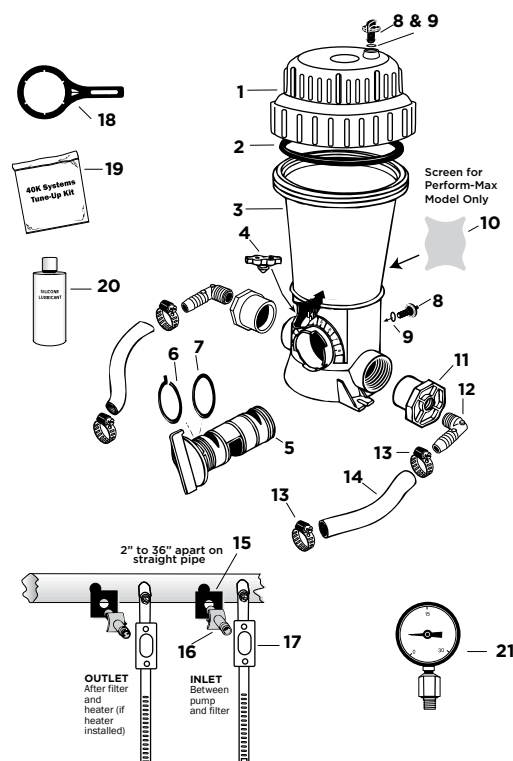
## FROG LEAP® 7800, FROG LEAP TWIN®, POOL FROG® 6100 and Perform-Max™ 920

REF #	PART #	CASE QTY	DESCRIPTION
1 & 2	01-22-1413	1	Cap w/O-Ring (FROG Leap Twin Mineral Infuser)
1 & 2	01-22-1427	4	Cap w/O-Ring (FROG)
1 & 2	01-22-1426	4	Cap 2 O-Ring Grn/Blue cs/4(Leap)
1 & 2	01-22-1428	4	Cap w/O-Ring (Perform-Max)
2	01-22-1922	12	Cap O-Ring
3	N/A		Body
4	01-22-9485	12	Pressure Relief Valve
5, 6 & 7	01-22-1448	6	Control Dial Assembly (Black)
5, 6 & 7	01-22-1458	6	Control Dial Assembly (FROG)
5, 6 & 7	01-22-1457	6	Control Dial Assembly (Leap)
6	01-22-1456	6	Control Dial O-Ring Set
7	N/A		Control Dial Locking Pin
8 & 9	01-22-9945	12	Knob w/O-Ring (Black)
8 & 9	01-22-9623	12	Knob w/O-Ring (FROG)
8 & 9	01-22-9625	12	Knob w/O-Ring (Leap)
10	01-22-9972	30	Silicone Lubricant
11	01-22-1711	6	Nipple Installation Kit
12	01-22-1480	1	Mounting Base (FROG)
12	01-22-1481	1	Mounting Base (Leap)
12	01-22-1485	1	Mounting Base (Black)
13	01-22-9662	12	Perform-Max Screen
14^	01-22-1470	12	25K System Tune-up Kit
15	01-22-4000	1	Pressure Gauge



## POOL FROG® 5400, 5430, XL PRO® and Perform-Max™ 940, 960, 980

REF #	PART #	CASE QTY	DESCRIPTION
1 & 2	01-22-9421	4	Cap w/O-Ring & Knob (Perform-Max)
1 & 2	01-22-9416	4	Cap w/O-Ring & Knob (FROG)
1 & 2	01-22-9428	4	Cap w/O-Ring & Knob (XL Pro/New Water)
2	01-22-9922	12	Cap O-Ring
3	N/A		Body
4	01-22-9485	12	Pressure Relief Valve
5, 6 & 7	01-22-9446	6	Control Dial Assembly (Black)
5, 6 & 7	01-22-9448	6	Control Dial Assembly (FROG)
6 & 7	01-22-9452	12	Control Dial O-Ring Set
8 & 9	01-22-9623	12	Knob w/O-Ring (FROG)
8 & 9	01-22-9945	12	Knob w/O-Ring (Black)
10	01-22-9662	12	Perform-Max Screen
11*	01-22-8626	6	2" x .5" Bushing
12*	01-22-7806	6	.5" 90° Elbow
13*	01-22-7696	6	Small Clamp
14*	01-22-7704	4	6' PVC Tubing (5/8" ID)
15*	01-22-7852	12	Scoop Gasket
16*	01-22-7796	6	Venturi Scoop
17*	01-22-7912	12	Scoop Clamp
18	01-22-8876	6	Cap/Control Dial Tool
19^	01-22-9950	12	40K System Tune-up Kit
20	01-22-9972	30	Silicone Lubricant
21	01-22-4000	1	Pressure Gauge



\*Parts for Off-line Cyclers 430, 630, 960, 5430 and 5630.

^Tune-Up Kit includes Silicone Lubricant, Control Dial O-Ring Set, Knob w/O-Rings (2), and Cap O-Ring.

For discontinued model numbers, contact Customer Service for parts.



©2026 King Technology, Inc. The following are trademarks of King Technology, Inc.:

**FROG®**

90-Day Algae Barrier®  
90-Day GoodBye Cloudy™  
90-Day GoodBye Phos™  
Algae Blocker 4Pro™  
Algae Gone™  
BAM®  
Filter Mate®  
Flippin' FROG®  
Flippin' FROG XL®  
FROG Balancing Basics™  
FROG DropH™  
FROG JumpH™

FROG Maintain®  
FROG Pool Pods™  
FROG Serene®  
FROG SooThe™  
FROG TArget™  
FROG TruDose Cap™  
FROG VIP™  
StoMPS™  
Instant FROG®  
Jump Start®  
Kick-It™

**FROG @ease®**  
SmartChlor®

**FROG Leap®**  
All-Out®  
Anti-Bac Mineral Pac®  
Infuzer®  
Pool Hibernation®  
Reveille®  
Pool Wake Up®  
Torpedo Pac®  
FROG Leap Twin®

4x Stain Guard™  
Ask FROG®  
Cleaner Clearer Softer®  
Cleaner Clearer Softer and Easier®  
Drop 'n Go™  
Drop 'n Go Pod Protection™  
Fresh Mineral Water™  
FROG Sanitizing Minerals®  
FROG Water Care®  
No mess, No guess, No stress™

6000 CLEARWATER DR | MINNETONKA, MN 55343 | 800.222.0169 | FROGPRODUCTS.COM

\*Compared to the minimum EPA recommended chlorine level of 1.0 ppm for a stabilized swimming pool or the minimum ANSI recommended bromine or chlorine level of 2.0 ppm for a hot tub or swim spa.

™Cleaner, Clearer and Softer water for pools, hot tubs and swim spas.

<sup>1</sup>[cdc.gov/healthywater/swimming/residential/disinfection-testing.html](https://cdc.gov/healthywater/swimming/residential/disinfection-testing.html)

20-48-0588