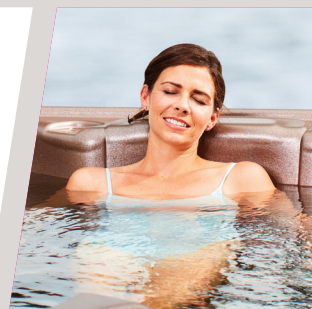


2021 FROG LEAP  
PRODUCT CATALOG



Our Vision:

Enrich Lives Daily

Our Mission:

Water treatment rock n’ roll through radical invention, unique delivery and star wars ingredients.



**The King Family**  
Front row: Mary, Joe, Randi, and Everett (Evie), (Aksel, not pictured)  
Back row: Carson, Graydon, (Cameron, not pictured) Erin, Alex and Oskar

This past year, we’ve created new ways to live and work. This year, FROG celebrates 25 years! Throughout those years, our goal has always been to enrich lives daily — that has never changed. We’ve helped dealers and distributors achieve lasting success — and that will never change. We thrive because we offer innovative products that enrich lives, and a business model that offers repeat business. We are grateful for so many things, including you, our dealers and distributors — and that will never change!

*Joe King, Owner and CEO*



We couldn’t  
have done it  
without you.

Join us in  
celebrating the  
past 25 years  
and all that’s  
to come by  
sharing your  
story on our

Circle of  
Celebration at  
[frog25.com](http://frog25.com).





# OUR COMMITMENT TO YOU

At King Technology, we value our partners and strive to make your life easier and a relationship with King Technology rewarding and profitable.

## Here is how we support your business:



Quality and innovative products that perform as advertised  
*(see pages 10-18)*



A proven repeat business model that creates true after-market growth



An enforced Minimum Advertised Price (MAP) policy that is in a consistent range between 97%-99% MAP compliance



The FROG Water Care App increases FROG satisfaction, resulting in greater repeat sales  
*(see page 5)*



“Order Through Your Dealer” is featured on the FROG Water Care App. Sign up so your customers can purchase products from your store  
*(see page 5)*



FREE literature and POP materials attract attention and educate consumers  
*(see pages 22-26)*



Program incentives reward your commitment to FROG products  
*(see page 27)*



Online and social media advertising drives consumers to dealers



Interactive dealer training helps your staff  
*(see page 27)*

## Here is what some dealers have told us:

“If other manufacturers did half as much as King Technology does with regard to innovative products, training, availability, ordering marketing materials online and MAP, that would be remarkable.”

*Sparkle Pools, Inc.*

“King is great to work with compared to other manufacturers. They are always accessible, and I’ve never had a situation they couldn’t resolve.”

*Alden Pools & Play*

“As a company, King is as invested in growth as we are. That kind of thought process really helps with the partnership.”

*Valley Pools & Spas*

# DEALER CENTRIC APP MAKES WATER CARE EASY AND DRIVES CONSUMERS TO YOUR STORE



**Order Your Custom QR code POP at partners.kingtechnology.com**



**Set up your App POP in your store & help customers scan & download the App.**



**Key App functions drive customers back to YOUR store!**

## App Drives Repeat Store Visits

It's time to replace your FROG @ease Mineral Cartridge. Visit [dealer name] and ask for the FROG.

It looks like you may be struggling with water balance. Take a pool water sample to your dealer for testing and advice.

It's time for another dose of FROG BAM to ensure algae protection the rest of the summer — Guaranteed! See [dealer name] now.

Have you replaced your FROG minerals yet? If not, don't miss out on Fresh Mineral Water benefits. Visit [dealer name] today.

## App Updates Help You and Drive Customers to Your Store

- “Order Through Your Dealer” — customers order from your store 24/7  
Sign up at [partners.kingtechnology.com/AppOrder](https://partners.kingtechnology.com/AppOrder)
- Out of Product Reminders
- Calendar integration with phone, Google and Outlook
- Order your FREE POP for the FROG Water Care App at [partners.kingtechnology.com](https://partners.kingtechnology.com)



Customer will see this on App's Home Screen

**WATCH FOR NEW UPDATES**

# INTRODUCING: FROG MAINTAIN

# THE RIGHT TEST STRIP FOR THE RIGHT CUSTOMER



## FROG Maintain: Non-Chlorine Maintenance Shock

Use FROG Maintain, a non-chlorine shock, as the ongoing maintenance shock until it's time to drain and refill the hot tub. It's a one-dose pouch, just open it, pour it in your hot tub water and in 15 minutes, the hot tub is ready! It's Cyanuric Acid free, so there's no buildup of irritating, smelly water.



Order Code:  
**01-14-6132**



Ongoing  
maintenance  
shock



One dose delivers  
clean, crystal  
clear water



Maintain the clean,  
without the chlorine  
or Cyanuric Acid



For use with all  
FROG hot tub  
sanitizers

## FROG Maintain is the Recommended Maintenance Shock for All FROG Hot Tub Systems:

- FROG @ease
- FROG Serene
- FROG Filter Mate

## When Customers Ask, “What Shock Should I Use?” We Have the Answer: FROG Jump Start and FROG Maintain

Our fast and easy start-up shock, FROG Jump Start, and FROG Maintain both come in one easy-to-use pouch. Your customers will find that shocking their hot tub is shockingly easy, just like you find selling them — keep your shelves stocked. Order your free POP to draw customers in and tell the story.



Order Code:  
**01-14-6012**



FROG Jump Start and  
Maintain Dangler:  
**20-48-0685**  
Postcard/bag stuffer:  
**20-48-2146**

With the unique technology behind FROG @ease sanitizing systems, we want every FROG @ease consumer to use FROG @ease Test Strips. In the same way, FROG Test Strips help maintain ideal chlorine or bromine levels for all other FROG products.

**We revised the packaging to help make sure your customer selects the right test strip.  
Look for these key differences:**

- The FROG @ease Test Strip bottle will now be yellow
- New packaging is now distinctly different from each other
- There is a call out on the FROG Test Strips that these are “not for use with FROG @ease Systems”



Order Code:  
**01-14-3350**



Order Code:  
**01-14-3318**

## Why is this so important?

FROG @ease with SmartChlor Technology® sanitizes differently than standard chlorine like dichlor. Its unique ability to self-regulate by converting a chlorine reserve to free chlorine when needed is what sets it apart. That means no constant shocking. FROG @ease — it's shockingly easy!

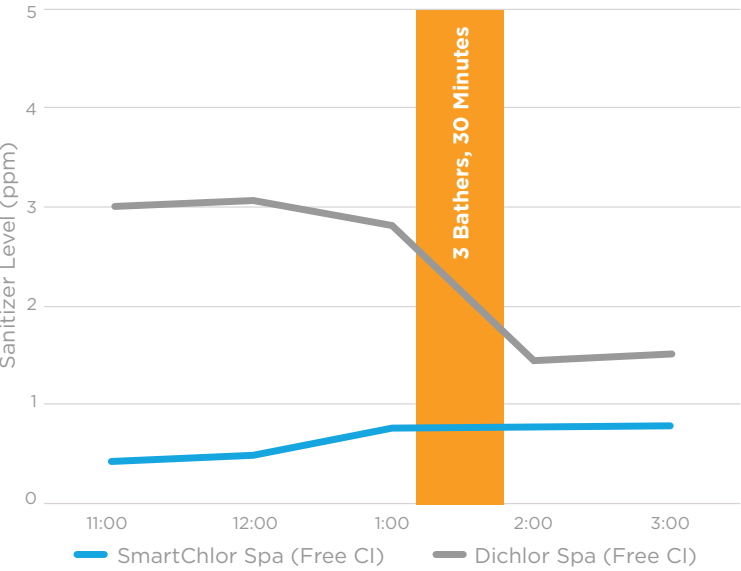
	Normal: Dichlor	The New Normal: FROG @ease
Total Chlorine	Reads Chloramines when Free and Total do not equal	SmartChlor Reserve that converts to Free when needed
Free Chlorine	Need to keep adding to maintain 2-4 ppm	Self-regulates at a consistent 0.5-1.0 ppm for the life of the cartridge
Shocking	At least weekly	Once a month
Cyanuric Acid	50% Cyanuric Acid — builds up quickly	No Cyanuric Acid — so no problems

All FROG @ease Systems come with a supply of 30 FROG @ease Test Strips. If your customers need more Test Strips, make sure they get the yellow bottle with FROG @ease on the front.



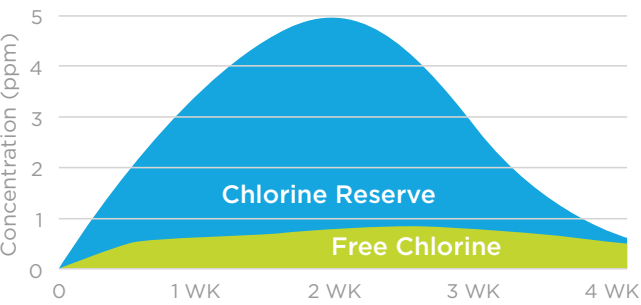


Self-Regulating Properties of SmartChlor Technology

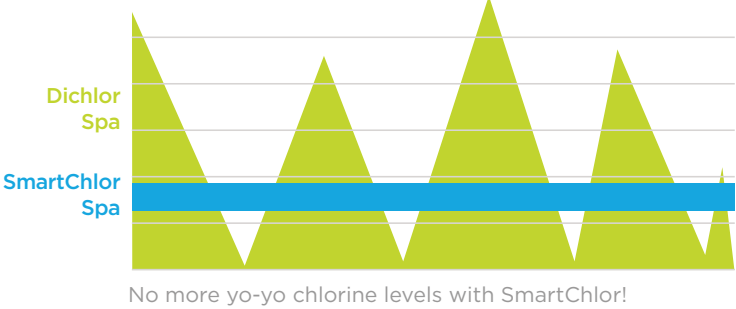


SmartChlor Technology maintains a consistently low free chlorine level of 0.5 to 1.0 ppm at all times. It does so by creating a reserve that converts to free chlorine when it senses demand on the hot tub. Dichlor’s free chlorine level drops significantly under demand requiring the user to shock. SmartChlor reduces shocking to only once a month!

The Genius of SmartChlor



SmartChlor vs. Dichlor



No more yo-yo chlorine levels with SmartChlor!

BE #1! ENSURE YOUR SUCCESS WITH FROG @ease

FROG @ease is 4X more profitable than dichlor so you grow your business exponentially every year!  
To calculate your profits with @ease, visit [frogatease.com](http://frogatease.com)

Earn more with FROG @ease

Annual Profit on each Hot Tub

\$120

\$30



Did you know every bottle of dichlor is about 50% Cyanuric Acid? It’s in the name!  
Did you know the CDC does not recommend the use of chlorine with Cyanuric Acid in hot tubs?

Weeks	Cyanuric Acid Level	Results
4	50	Problems begin
7	100	Chlorine ineffective
10	150	Unrecoverable

Based on 1/2 tsp per 100 gallons 4x per week

With every dose of dichlor, the Cyanuric Acid builds while the chlorine becomes less and less effective. In as little as seven weeks, the consumer may have no option but to drain and refill the hot tub.

At Cyanuric Acid levels of over 50 ppm, hot tub owners will experience:

Cloudy Water

Smelly Water

Shorter Water Life

Harder to Manage Water

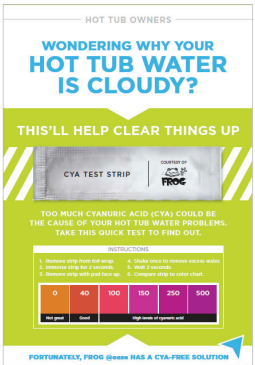
Itchy Water

Unhappy Hot Tub Owners

The good news is FROG @ease has 0% Cyanuric Acid. Converting your dichlor customers will mean happier hot tub owners who remain loyal to you.

Here’s how to get started:

- Learn more at [frogatease.com](http://frogatease.com)
- Take our Cyanuric Acid test at [partners.kingtechnology.com](http://partners.kingtechnology.com)
- Order our Cyanuric Acid Test Strip Cards to promote FROG @ease



Test Strip Card  
Give this card to struggling hot tub owners. When they test their Cyanuric Acid and the levels are high, you have the solution - FROG @ease

Order Code: 20-49-0221

# FROG PRODUCTS FOR HOT TUBS

Supporting dealers with a Minimum Advertised Price (MAP) Policy

HAVE QUESTIONS?  
CALL 800-222-0169



### FROG SERENE® FLOATING SYSTEM

Fresh Mineral Water<sup>®∞</sup> for any hot tub up to 600 gallons. Comes with FROG Jump Start start-up shock and 10 FROG Test Strips. It simply floats in the hot tub.

ORDER CODE: 01-14-3883

MSRP: \$49.95 each

6 systems per case / 90 cases per pallet



### FROG SERENE CARTRIDGE KIT

Includes 1 Mineral Cartridge and 3 Bromine Cartridges.

ORDER CODE: 01-14-3856

MSRP: \$70.74 each



\$63.34 each

6 systems per case / 105 cases per pallet



### FROG® @ease® FLOATING SANITIZING SYSTEM

Fresh Mineral Water<sup>∞</sup> with SmartChlor Technology for hot tubs up to 600 gallons. Comes with FROG Jump Start start-up shock and 30 FROG @ease Test Strips. Floats in the tub and flips when empty. This system is replaced every 4 months or when draining the hot tub.

ORDER CODE: 01-14-3256

MSRP: \$48.95



\$43.95

6 systems per case / 56 cases per pallet



### FROG @ease SMARTCHLOR CARTRIDGE 3 PACK

For use only with the FROG @ease Floating Sanitizing System. The unique SmartChlor Technology slowly releases over 3-4 weeks. When the System flips over, it is time to replace.

ORDER CODE: 01-14-3258

MSRP: \$45.95 per 3 pack



\$43.95 per 3 pack

6 3 packs per case / 56 cases per pallet



### FROG @ease TEST STRIPS

With the unique properties of SmartChlor Technology, FROG @ease has its own test strips with a convenient Out Indicator reading. Easily distinguishable in new yellow container.

ORDER CODE: 01-14-3350

MSRP: \$9.95 each

30 count bottle / 12 bottles per case / 150 cases per pallet

### FROG SERENE MINERAL CARTRIDGE

For use in the FROG Serene Floating and FROG In-Line Systems. Set Minerals to #6 (wide open). Lasts 4 months or until hot tub is drained and refilled. Simply discard and replace.

ORDER CODE: 01-14-3812

MSRP: \$35.49 each



\$30.49 each

12 units per case / 186 cases per pallet



### FROG SERENE BROMINE CARTRIDGE (150 gm)

For use in the FROG Serene Floating and FROG In-Line Systems or as a stand-alone floater. Adjustable and long lasting (2-4 weeks). Simply discard or recycle and replace.

ORDER CODE: 01-14-3824

MSRP: \$11.75 each



\$10.95 each

24 units (2 12 packs) per case / 128 cases per pallet



### FROG FILTER MATE®

Use this mineral hot tub disinfectant in the core of a filter, in a skimmer tray or in the filter well. Supplement with bromine or chlorine. Set reminder dial and replace every 4 months.

ORDER CODE: 01-14-3712

MSRP: \$41.49 each

12 systems per case / 150 cases per pallet



### FROG JUMP START®

The effervescent start-up shock for hot tubs up to 600 gallons. Use every time the hot tub is drained and fresh water is added.

ORDER CODE: 01-14-6012

MSRP: \$3.95 each

72 units per case (6 12 packs) / 81 cases per pallet



### FROG MAINTAIN™

The recommended non-chlorine maintenance shock for all FROG hot tub products. Up to 600 gallons. Enjoy clean, sparkling water in just 15 minutes. Cyanuric Acid free.

ORDER CODE: 01-14-6132

MSRP: \$3.95 each

72 units per case (6 12 packs) / 81 cases per pallet



### FROG TEST STRIPS

Fresh Mineral Water<sup>∞</sup> pools or hot tubs start with FROG Test Strips. The testing accuracy of the pros in an easy-to-use dip and read strip helps FROG users maintain a low chlorine or bromine level.

Not for use with FROG @ease, use 01-14-3350

ORDER CODE: 01-14-3318

MSRP: \$11.95 each

50 count bottle / 12 bottles per case / 150 cases per pallet





# FROG LEAP BRAND EVEN STRONGER



## Introducing 1-2-3 Ahhh! New from FROG Leap.

With our new FROG Leap packaging we are introducing an easy way to capture the 3 parts of the FROG Leap System.

Step 1 – The Minerals

Step 2 – Algae Protection

Step 3 – Chlorine

Watch for it on packaging and POP and use it to better describe the ease and convenience of FROG Leap.  
The result — happier customers and strong after market sales!

### STEP 1 IT STARTS WITH THE MINERALS...



Before

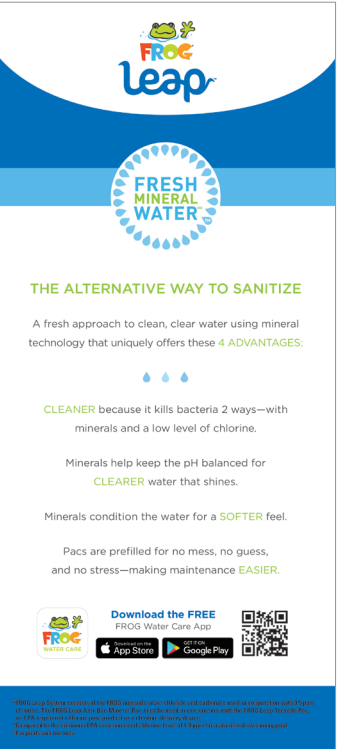


After

- Cleaner look with full color graphics
- Emotive image to convey fun and easy
- Strong consumer tested benefits



- The Fresh Mineral Water<sup>∞</sup> story continues to resonate
- 8 helpful icons explain the benefits of the entire Leap System



- The back covers the ease of 3 simple steps and how long each lasts

### STEP 2 AND STEP 3 ALGAE PROTECTION GUARANTEE AND CHLORINE

- Artwork from the minerals carries over to the 6pk tray and the Pool Wake Up! kit.
- Simple and clean look with “Step 2” and “Step 3” prominently displayed



Before



After



Before



After

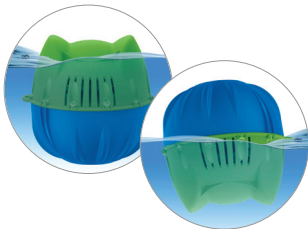


# FLIPPIN' FROG FLIPS YOUR SALES OVER AND OVER AGAIN



Flippin' FROG for soft-sided pools from 2,000–5,000 gallons and Flippin' FROG XL for any pool type from 5,000–10,000 gallons.

More than a floater. It's a complete pool care system that floats in the pool and flips over when empty.



## Flippin' FROG delivers Fresh Mineral Water<sup>∞</sup> for soft-sided pools and the easiest water care system ever.

- **CLEANER** because it kills bacteria 2 ways — with minerals and a low level of chlorine.
- Minerals help keep the pH balanced for **CLEARER** water that shines.
- Minerals condition the water for a **SOFTER** feel.
- Cartridges are prefilled for no mess, no guess, no stress. Making maintenance — **EASIER**.

Ask Your Sales Representative About our Flippin' FROG Promotion — October 1, 2020 — September 30, 2021!



The complete Flippin' FROG System all in 1 box  
Order Code: **01-12-8406**



The complete Flippin' FROG XL System all in 1 box  
Order Code: **01-12-8606**

## Keep your store stocked

Keep your customers happy! Minerals last 6 months, Chlorine lasts 3–4 weeks. People are home and using their pools — they'll be looking for the Flippin' FROG System and the refills.



Flippin' FROG Replacement Chlorine Cartridges  
Order Code: **01-03-8356**



Flippin' FROG XL Replacement Chlorine Cartridges  
Order Code: **01-03-8550**

# FROG LEAP PRODUCTS FOR POOLS

Supporting dealers with a Minimum Advertised Price (MAP) Policy



## FROG LEAP<sup>®</sup> INFUZER<sup>®</sup>

Fresh Mineral Water<sup>∞</sup> for pools 7,000 to 25,000 gallons. Includes a FROG Leap Infuzer, a FROG Leap Anti-Bac Mineral Pac 25K and a 6" nipple installation kit. Do not install off-line.

ORDER CODE: **01-01-7820**

MSRP: **\$329.95**

96 units per pallet



## FROG LEAP ANTI-BAC MINERAL PAC<sup>®</sup> 25K

Fits FROG Leap 7800 and Pool FROG 5100 or 6100. For pools up to 25,000 gallons.

ORDER CODE: **01-12-7822**

MSRP: **\$112.95 each**

**MAP** **\$97.95 each**

12 units per case / 24 cases per pallet



## FROG LEAP TWIN<sup>®</sup>

Fresh Mineral Water<sup>∞</sup> for pools up to 40,000 gallons. Includes 2 FROG Leap Infuzers and 1 FROG Leap Anti-Bac Mineral Pac 40K. Use with the FROG Leap Torpedo Pac 4 lb.

ORDER CODE: **01-01-7850**

MSRP: **\$543.95**

24 units per pallet



## FROG LEAP ANTI-BAC MINERAL PAC<sup>®</sup> 40K

Fits FROG Leap Twin, FROG Leap 7800 and Pool FROG 6100. For pools up to 40,000 gallons.

ORDER CODE: **01-12-7852**

MSRP: **\$144.95 each**

**MAP** **\$120.95 each**

12 units per case / 24 cases per pallet



## FROG LEAP TORPEDO PAC<sup>®</sup>

Prefilled with Trichlor. For use in FROG Leap 7800 and POOL FROG 5100, 5400 or 6100.

ORDER CODE: **01-03-7937**

MSRP: **\$21.95 each**

**MAP** **\$21.49 each**

12 units per case (2 6-packs) / 40 cases per pallet



## FROG LEAP TORPEDO PAC<sup>®</sup> 4 lbs

Prefilled with 4 lbs. of Trichlor. For use in FROG Leap Twin.

ORDER CODE: **01-03-7833**

MSRP: **\$38.49**

**MAP** **\$35.49 each**

3 units per case / 64 cases per pallet



## FROG LEAP POOL WAKE UP!<sup>®</sup> / POOL HIBERNATION<sup>®</sup>

3-Step Opening or Closing Pack includes Depth Charge<sup>®</sup> non-chlorine shock, Reveille<sup>®</sup> chlorine shock and All-Out 90-Day Algae Preventative. One pack per 15,000 gallons.

ORDER CODE: **01-10-7858**

MSRP: **\$50.95 each**

**MAP** **\$48.95 each**

4 units per case / 40 cases per pallet



## FROG LEAP ALL-OUT<sup>®</sup>

Fits inside the Anti-Bac Mineral Pac on all FROG Leap and POOL FROG Systems. One bottle per 15,000 gallons for a 90-day Algae Protection Guarantee!

ORDER CODE: **01-10-7872**

MSRP: **\$35.95 each**

**MAP** **\$29.95 each**

12 units per case / 50 cases per pallet





# FROG PRODUCTS FOR POOLS

Supporting dealers with a Minimum Advertised Price (MAP) Policy



**FLIPPIN' FROG®**  
Fresh Mineral Water∞ for soft-sided pools 2,000 to 5,000 gallons.  
ORDER CODE: **01-12-8406**  
MSRP: **\$31.95** **MAP** **\$29.95**  
*6 systems per case / 49 cases per pallet*



**FLIPPIN' FROG REPLACEMENT CHLORINE CARTRIDGE**  
Fits the Flippin' FROG System. Lasts 3-4 weeks.  
ORDER CODE: **01-03-8356**  
MSRP: **\$11.95** **MAP** **\$10.95**  
*6 systems per case / 84 cases per pallet*



**FLIPPIN' FROG XL®**  
Fresh Mineral Water∞ for any pool 5,000 to 10,000 gallons.  
ORDER CODE: **01-12-8606**  
MSRP: **\$63.95** **MAP** **\$58.95**  
*6 units per case / 20 cases per pallet*



**FLIPPIN' FROG XL REPLACEMENT CHLORINE CARTRIDGE**  
Fits the Flippin' FROG XL System. Last 3-4 weeks.  
ORDER CODE: **01-03-8550**  
MSRP: **\$23.95** **MAP** **\$21.95**  
*8 units per case / 78 cases per pallet*



**INSTANT FROG®**  
Fresh Mineral Water∞ for in-ground pools up to 25,000 gallons. Requires no installation.  
RETAIL ORDER CODE: **01-18-4406**  
MSRP: **\$122.95** **MAP** **\$103.95**  
*6 per case / 112 cases per pallet*

**BULK FOR SERVICE ORDER CODE: 01-18-4410**  
**Great product for service companies!**  
**NOTE: NOT FOR RETAIL SALE.** Call King Technology for pricing.  
6 units per case/110 cases per pallet



**FROG TEST STRIPS**  
Fresh Mineral Water∞ pools or hot tubs start with FROG Test Strips. The testing accuracy of the pros in an easy-to-use dip and read strip helps FROG users maintain a low chlorine or bromine level.  
ORDER CODE: **01-14-3318**  
MSRP: **\$11.95 each**  
*50 count bottle / 12 bottles per case / 150 cases per pallet*

## NEW WATER®

Lightweight, Prefilled chlorine pacs with erosion technology



**NEW WATER CYCLER 120**  
In-line with 1.5" threaded inlet/outlet ports for use on pools up to 25,000 gallons.  
Do not install off-line. Uses New Water Cyclor Pac #105C.  
ORDER CODE: **01-01-0120**  
MSRP: **\$191.95 each**  
*96 units per pallet*



**NEW WATER CYCLER 400**  
In-line with 2" threaded inlet/outlet ports for use on pools up to 40,000 gallons.  
Do not install off-line. Uses New Water Cyclor Pac #407C.  
ORDER CODE: **01-01-0400**  
MSRP: **\$203.95 each**  
*96 units per pallet*



**NEW WATER CYCLER 430**  
Off-line unit with accessory kit for use on pools up to 25,000 gallons.  
Do not install in-line. Uses New Water Cyclor Pac #407C.  
ORDER CODE: **01-01-0430**  
MSRP: **\$250.95 each**  
*96 units per pallet*



**NEW WATER CYCLER PAC 105C**  
Prefilled with 4.16 lbs. of Trichlor. For use in the New Water Cyclor 120.  
ORDER CODE: **01-03-1413**  
MSRP: **\$39.95 each**  
*3 units per case / 64 cases per pallet*



**NEW WATER CYCLER PAC 407C**  
Prefilled with 6.16 lbs. of Trichlor. For use in New Water Model 400 & 430 Cyclers.  
ORDER CODE: **01-03-4613**  
MSRP: **\$56.49 each**  
*3 units per case / 56 cases per pallet*





# PERFORM-MAX™ BY SANI-KING

Chemical feed systems for chlorine or bromine



**PERFORM-MAX 920**  
In-line only for pools up to 20,000 gallons using chlorine or 15,000 gallons using bromine.  
7 lb. capacity.  
**ORDER CODE: 01-05-0920**  
**MSRP: \$143.95 each**  
*96 units per pallet*



**PERFORM-MAX 940**  
In-line only for pools up to 50,000 gallons using chlorine or 25,000 gallons using bromine.  
10 lb. capacity.  
**ORDER CODE: 01-05-0940**  
**MSRP: \$161.95 each**  
*96 units per pallet*



**PERFORM-MAX 960**  
Off-line only for pools up to 40,000 gallons using chlorine or 20,000 gallons using bromine.  
10 lb capacity.  
**ORDER CODE: 01-05-0960**  
**MSRP: \$197.95 each**  
*96 units per pallet*



**PERFORM-MAX 980**  
Model #940 in-line with (2) 2" MPT x 1.5" FPT Reducers. Follow pool sizes for Model 940.  
**ORDER CODE: 01-05-0980**  
**MSRP: \$173.95 each**  
*96 units per pallet*

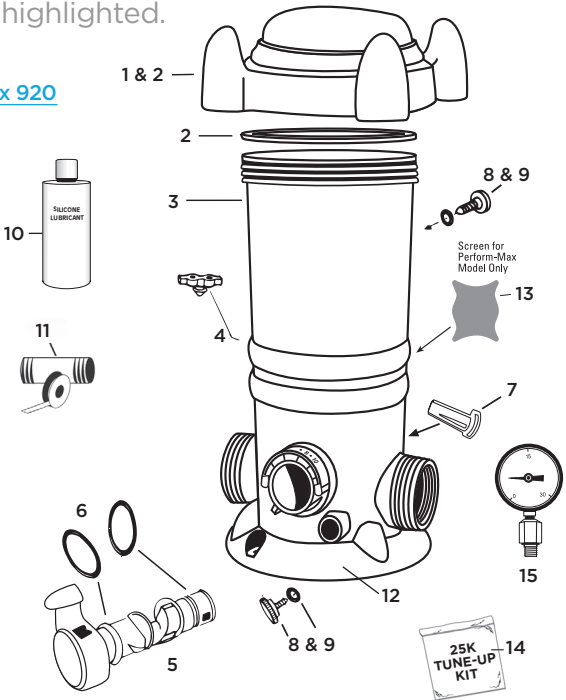
# PARTS DIAGRAMS AND PRICING

CAN'T FIND PARTS? CALL 800-222-0169

For an ideal stocking order, see the most used replacement parts highlighted.  
*Please note that some part numbers and case quantities have changed.*

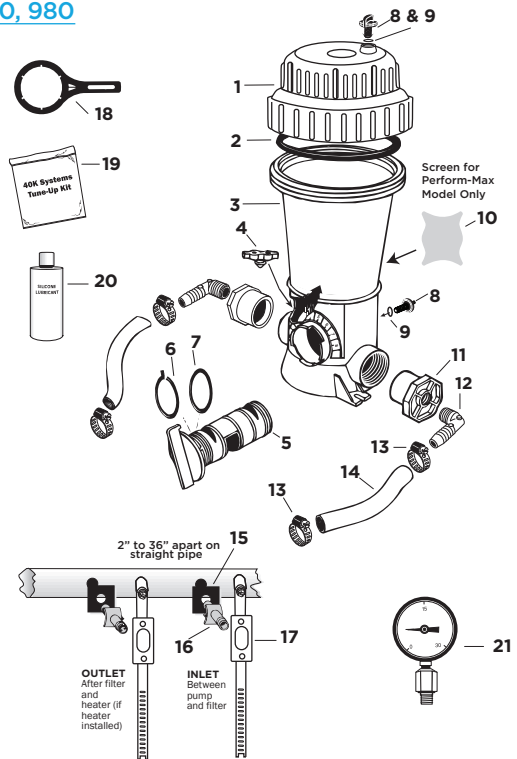
**FROG LEAP 7800, FROG LEAP TWIN, POOL FROG 6100, New Water 120 and Perform-Max 920**

REF #	PART #	CASE QTY	DESCRIPTION	SUGG. LIST
1 & 2	01-22-1410	1	Cap w/O-Ring (New Water)	\$39.58
1 & 2	01-22-1413	1	Cap w/O-Ring (FROG Leap Twin Mineral Cyclor)	\$39.58
1 & 2	01-22-1427	4	Cap w/O-Ring (FROG)	\$39.58
1 & 2	01-22-1426	4	Cap 2 O-Ring Grn/Blue cs/4(Leap)	\$39.58
1 & 2	01-22-1428	4	Cap (Perform-Max)	\$39.58
2	01-22-1922	12	Cap O-Ring	\$12.08
3	N/A		Body	N/A
4	01-22-9485	12	Pressure Relief Valve	\$6.83
5, 6 & 7	01-22-1448	6	Control Dial Assembly (Black)	\$19.05
5, 6 & 7	01-22-1458	6	Control Dial Assembly (FROG)	\$19.05
5, 6 & 7	01-22-1457	6	Control Dial Assembly (Leap)	\$19.05
6	01-22-1456	6	Control Dial O-Ring Set	\$6.30
7	N/A		Control Dial Locking Pin	N/A
8 & 9	01-22-9945	12	Knob w/O-Ring (Black)	\$3.95
8 & 9	01-22-9623	12	Knob w/O-Ring (FROG)	\$3.95
8 & 9	01-22-9625	12	Knob w/O-Ring (Leap)	\$3.95
10	01-22-9972	30	Silicone Lubricant	\$4.90
11	01-22-1711	6	Nipple Installation Kit	\$8.17
12	01-22-1480	1	Mounting Base (FROG)	\$10.67
12	01-22-1481	1	Mounting Base (Leap)	\$10.67
12	01-22-1485	1	Mounting Base (Black)	\$10.67
13	01-22-9662	12	Perform-Max Screen	\$6.50
14^	01-22-1470	12	25K System Tune-up Kit	\$22.87
15	01-22-4000	1	Pressure Gauge	\$33.80



**POOL FROG 5400, 5430, XL Pro, New Water 400, 430 and Perform-Max 940, 960, 980**

REF #	PART #	CASE QTY	DESCRIPTION	SUGG. LIST
1 & 2	01-22-9421	4	Cap w/O-Ring & (Perform-Max)	\$51.97
1 & 2	01-22-9416	4	Cap w/O-Ring & Knob (FROG)	\$51.97
1 & 2	01-22-9428	4	Cap w/O-Ring & Knob (XL Pro/New Water)	\$51.97
2	01-22-9922	12	Cap O-Ring	\$17.43
3	N/A		Body	N/A
4	01-22-9485	12	Pressure Relief Valve	\$6.83
5, 6 & 7	01-22-9446	6	Control Dial Assembly (Black)	\$19.53
5, 6 & 7	01-22-9448	6	Control Dial Assembly (FROG)	\$19.53
6 & 7	01-22-9452	12	Control Dial O-Ring Set	\$7.93
8 & 9	01-22-9623	12	Knob w/O-Ring (FROG)	\$3.95
8 & 9	01-22-9945	12	Knob w/O-Ring (Black)	\$3.95
10	01-22-9662	12	Perform-Max Screen	\$6.50
11*	01-22-8626	6	2" x .5" Bushing	\$6.30
12*	01-22-7806	6	.5" 90° Elbow	\$5.05
13*	01-22-7696	6	Small Clamp	\$4.10
14*	01-22-7704	4	6' PVC Tubing (5/8" ID)	\$21.68
15*	01-22-7852	12	Scoop Gasket	\$2.57
16*	01-22-7796	6	Venturi Scoop	\$4.85
17*	01-22-7912	12	Scoop Clamp	\$12.32
18	01-22-8876	6	Scoop/Control Dial Tool	\$8.98
19^	01-22-9950	12	40K System Tune-up Kit	\$31.45
20	01-22-9972	30	Silicone Lubricant	\$4.90
21	01-22-4000	1	Pressure Gauge	\$33.80



\*Parts for Off-line Cyclers 430, 630, 960, 5430 and 5630.  
^ Tune-Up Kit includes Silicone Lubricant, Control Dial O-ring Set, Knob w/O-rings (2), and Cap O-ring.  
For discontinued model numbers, contact Customer Service for parts.

All prices subject to change without notice.



# COMPETING AGAINST SALT CHLORINE GENERATORS

# FROG AND MULTI OR VARIABLE SPEED PUMPS



### HOW POOL OWNERS FEEL ABOUT THEIR POOL\*

Top 3 Likes	Top 3 Dislikes
Ambiance	Maintenance
Fun Factor	Cost
Health Benefits	Water Balance

\*Based on an independent study of pool owners

Salt Chlorine Generators sound like they address the pool owners dislikes but the reality is...

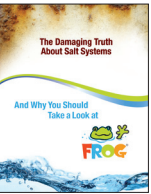
- Salt pools require monitoring water balance and chlorine levels like any other pool
- Salt pools need an expensive replacement cell every few years
- Salt pools typically drive pH up making it more difficult to balance water

### HERE’S WHY FROG IS THE BETTER OPTION

FROG Mineral Benefits	Salt Generator Faults
Kills bacteria 2 ways	Chlorine-only sanitizer
Reduces chlorine use up to 50%*	Produces chlorine at standard or higher levels
Helps keep the pH neutral	Drives pH up needing acid doses regularly
Easy on pool surfaces and equipment	Corrodes heaters, patio pavers & more
Works continuously for 6 months	Cells require cleaning regularly
Accepted on any type of pool	Not allowed on steel walled pools
Does not need electricity to work	Increases electric bills every summer
Reasonably priced	Replacement cells are expensive
Easy to use FROG Water Care App	Readings can be complicated

\*Compared to the minimum EPA recommended chlorine level of 1.0 ppm for a stabilized swimming pool.

### FRESH MINERAL WATER<sup>∞</sup> Supporting Literature



BROCHURE

ORDER CODE: 20-48-0625

Help your customers who are considering salt to understand the value in choosing FROG instead.

The U.S. Department of Energy recently passed federal regulations mandating specific performance standards for pumps. Currently the only way to meet those standards is with a multispeed or variable speed pump. To ensure heaters, cleaners and sanitizing systems, like FROG, will perform as designed . . .

**JUST REMEMBER: 4 TO 8 FOR 6!**  
(4 TO 8 PSI FOR 6 HOURS A DAY ON HIGH SPEED)

### Here are a few tips for ensuring success:

TIP 1	PROGRAM THE PUMP	TIP 2	CHECK THE BACK PRESSURE
-------	------------------	-------	-------------------------

Program the pump to meet the needs of each pool owner with at least 6 hours on high speed.  
(Approximately 3000 RPMs)



While on high speed, check the back pressure on the FROG System with our pressure gauge to ensure it is between 4 and 8 psi.  
  
ORDER CODE: 01-22-4000



TIP 3	CHANGE THE EYEBALL FITTING	TIP 4	SET THE FROG DIAL
-------	----------------------------	-------	-------------------

If lower than 4 psi or higher than 8 psi, change out the eyeball fitting in the return jets to increase or decrease back pressure.  
(A smaller eyeball to increase pressure and a larger eyeball to decrease pressure)



Set the FROG dial and have the pool owner monitor the chlorine levels for a few days and adjust the setting no more than 1 number per day until the level stays between 0.5 and 1.0 ppm.



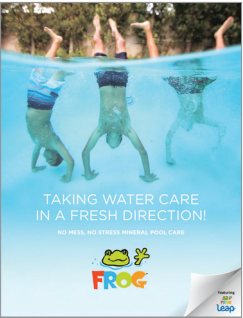
For more information on the hydraulics of FROG, see our training portal at [partners.kingtechnology.com](https://partners.kingtechnology.com)

# MARKETING MATERIALS



## LITERATURE

Packaged in 50s



All Pool Brochure with FROG Leap  
**20-48-0675**  
(8.5"W x 11"H)



FROG Hot Tub Products Brochure  
**20-48-0670**  
(8.5"W x 11"H)



FROG @ease In-Line System Cap Talker  
**20-48-2114**  
(3.5"W x 13"H)



Flippin' FROG Brochure  
**20-48-0619**  
(4"W x 8.5"H)



FROG @ease In-Line System Brochure  
**20-48-0636**  
(8.5"W x 11"H)



Instant FROG Brochure  
**20-48-0523**  
(4"W x 8.5"H)



FROG @ease Floating System Brochure  
**20-48-2113**  
(8.5"W x 11"H)



FROG Jump Start and Maintain Postcard/Bagstuffer  
**20-48-2146**  
(4"W x 6"H)



FROG @ease In-Line Bag Stuffer  
**20-48-2139**  
(4"W x 6"H)

## DANGLERS



FROG Jump Start and Maintain Dangler  
**20-48-0685**  
(8"W x 4.5"H)



FROG @ease Conversion Dangler  
**20-48-0671**  
(8.5"W x 6"H)

## COUNTER DISPLAYS



FROG Countermat Holder  
**20-48-0664** (19"W x 13"H)

Order 1 or MORE of → the 5 counter mat inserts on the right when ordering this holder.



Customize for your store — App Counter Card & Tear Pads  
Counter Card: **20-48-2144**  
Tear Pads: **20-48-2145**



FROG @ease Floating System Counter Display  
**03-01-2063**  
(11"W x 16.75"H)



All Hot Tub Products Countermat Insert  
**20-48-0294**



FROG Leap Countermat Insert  
**20-48-0272**



FROG @ease Floating System Countermat Insert  
**20-48-0296**



Flippin' FROG Countermat Insert  
**20-48-0273**



FROG @ease In-Line Countermat Insert  
**20-48-0295**

## SELF-STANDING DISPLAYS



Flippin' FROG and Flippin' FROG XL Display  
**03-01-2057**  
(25.5"W x 17"D x 67"H)



Stand Up FROG  
**03-01-2075**  
(34"W x 59"H)



FROG @ease Self-standing Display  
**03-01-2051**  
(19.25"L x 11.25"W x 64.5"H)

## BANNERS / DECALS



FROG Water Care App Banner  
**20-48-2037**  
(48"W x 24"H)



Flippin' FROG Banner  
**20-48-2094**  
(48"W x 24"H)



Intex Store Sign  
**20-48-0607**  
(24"W x 36"H)



FROG Door Decal  
**20-48-2035**  
(7"W x 5"H)

ORDER THESE FREE MATERIALS AT [PARTNERS.KINGTECHNOLOGY.COM](https://partners.kingtechnology.com)



# HOT TUB PLANOGRAM IDEAS

SEE MORE AT  
PARTNERS.KINGTECHNOLOGY.COM



These items are designed to help you bring attention to your on-shelf product displays.  
You can use some or all of these as you wish.

## RETAIL SHELF LINERS



FROG @ease Shelf Liners  
**20-48-0668** (24"W x 4"H)



FROG Serene Shelf Liners  
**20-48-0669** (24"W x 4"H)

## aisle violators

To be used with one of the clips below



FROG Serene Aisle Violator  
**20-48-2133**  
(4"W x 11"H)



FROG @ease Floating System Aisle Violator  
**20-48-2131**  
(4"W x 11"H)



FROG @ease In-Line System Aisle Violator  
**20-48-2130**  
(4"W x 11"H)

## aisle violator clips

Must be ordered separately at time of ordering Aisle Violator

Roto Clips  
Clips on to edge of shelf  
**20-48-2129**



Shelf Top Clip  
Inserts into holes on the top of metal shelves  
**20-48-2128**



## FROG @ease PLANOGRAM



Size: 5' tall by 2' wide

- Holds:**
- 4 @ease Floating Systems
  - 12 @ease Floating SmartChlor Cartridge 3pks
  - 4 @ease In-Line Systems
  - 4 @ease In-Line SmartChlor Cartridge 12pks
  - 2 @ease In-Line SmartChlor Mineral 12pks
  - 2 Jump Start 12pks
  - 2 FROG Maintain 12pks
  - 9 @ease Test Strips

## FROG SERENE PLANOGRAM



Size: 5' tall by 2' wide

- Holds:**
- 12 Serene Systems
  - 2 Serene Mineral Cartridge 12pks
  - 6 Serene Bromine Cartridge 12pks
  - 8 Serene Cartridge Kits
  - 2 Jump Start 12pks
  - 2 FROG Maintain 12pks
  - 9 FROG Test Strips

## ALL PRODUCTS PLANOGRAM



Size: 5' tall by 4' wide

- Holds:**
- 6 @ease Floating Systems
  - 8 @ease Floating SmartChlor Cartridge 3pks
  - 8 Serene Systems
  - 2 Serene Bromine Cartridge 12pks
  - 2 Serene Mineral Cartridge 12pks
  - 6 Serene Cartridge Kits
  - 6 @ease In-Line Systems
  - 2 @ease In-Line SmartChlor Cartridge 12pks
  - 2 @ease Mineral Cartridge 12pks
  - 2 Serene 200gm Bromine Cartridge 12pks
  - 2 Filter Mate 12pks
  - 9 @ease Test Strips
  - 4 Jump Start 12pks
  - 4 FROG Maintain 12pks
  - 9 FROG Test Strips

ORDER THESE FREE MATERIALS AT PARTNERS.KINGTECHNOLOGY.COM

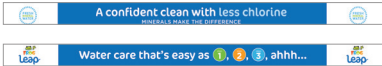
VISIT PARTNERS.KINGTECHNOLOGY.COM

# NEW POP JUST FOR FROG LEAP

From floor stickers that lead the way to aisle violators and shelf liners that tell the 1-2-3- story. From danglers that introduce the new look to a new poster and floor stand for show & tell anywhere in the store. Combine these with the new counter mat, acrylic display and stand-up FROG, we have you covered!



FROG Leap Aisle Violator  
**20-48-2143**  
(9"W x 24"H)  
To install, order clips shown on page 24



FROG Leap Shelf Liners  
**20-48-0677**  
(36"W x 4"H)



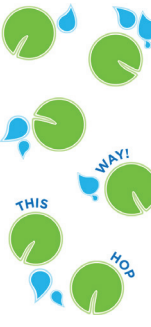
FROG Leap Mineral Transition Dangler  
**20-48-0679**  
(6"D x 11"H)



FROG Leap Algae Transition Dangler  
**20-48-0680**  
(6"D x 11"H)



FROG Leap Chlorine Transition Dangler  
**20-48-0678**  
(6"D x 11"H)



FROG Floor Stickers  
**20-48-0676**  
(16"W x 24"H)



FROG Leap Mineral Display  
**03-01-2041**  
(4"W x 8.5"H)  
Art card **20-48-2142** also available



FROG Leap Poster and Mineral Stand  
**20-48-2141**  
Stand (22"W x 60"H)  
**20-48-2140**  
Poster (22"W x 28"H)



Fresh Mineral Water<sup>∞</sup> End Cap Header  
**20-48-0681**  
(42"W x 24"H)

# SIX REASONS TO USE PARTNERS.KINGTECHNOLOGY.COM

## #1 INTERACTIVE TRAINING

No log-in necessary; get a free FROG polo for completing one or more courses!

## #2 FREE POP MATERIALS

No need to wait until 8 a.m. - 5 p.m. Central Standard Time to order. Create excitement in your store with POP, draw customers to product and let the POP educate them. Choose from a wide variety of POP and order instantly at [partners.kingtechnology.com](https://partners.kingtechnology.com).

## #3 PROGRAM PARTICIPATION

Sign up for programs and receive your free goods faster by uploading your program documents.

## #4 CO-OP ADVERTISING

Get paid to advertise FROG in print, digital or radio with easy-to-order premade, customizable templates with your logo and information. Need help? Ask! We'll customize for you.

## #5 TOOLS TO UPDATE YOUR WEBSITE

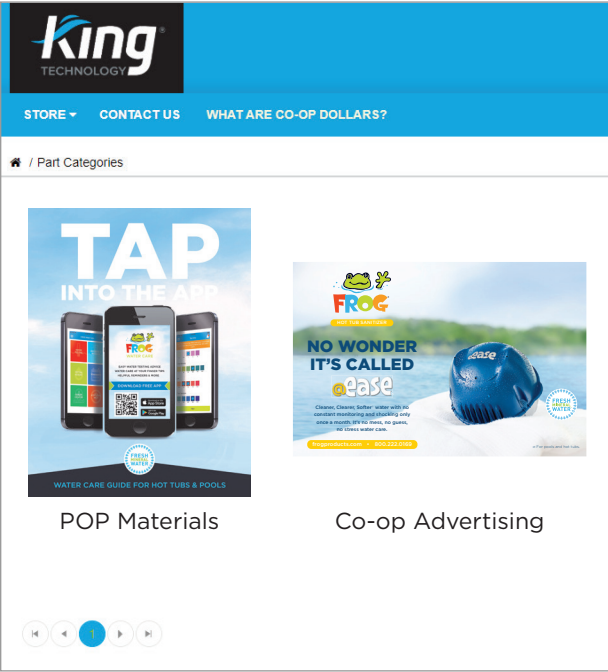
Use our image library for low and high resolution photos and our helpful website guide.

## #6 DOWNLOAD HELPFUL INFORMATION

Get the latest catalog or familiarize yourself with our MAP policy. Call 800-222-0169.



Interactive game format shows how to sell FROG



Go to [partners.kingtechnology.com](https://partners.kingtechnology.com) for all your free POP and customizable advertising

Visit [partners.kingtechnology.com](https://partners.kingtechnology.com)





©2021 King Technology, Inc. The following are trademarks of King Technology, Inc.:

FROG®  
FROG Leap®  
Pool Wake Up!®  
Pool Hibernation®

Flippin' FROG®  
Flippin' FROG XL®  
FROG Leap® All-Out®  
FROG Serene®

FROG® Filter Mate®  
Instant FROG®  
FROG® @ease®  
SmartChlor®

FROG® Jump Start®  
FROG Maintain™  
Fresh Mineral Water®  
New Water®  
Perform-Max™

530 11TH AVE S, HOPKINS, MN 55343 • 800.222.0169 • FROGPRODUCTS.COM

20-48-0588 553092043A